



WOODBURNING STOVES





.....

Environmentally friendly wood burning stoves – cosy heat and clean lines

.....

When the TermaTech designers begin creating a stove, the starting point is that the aesthetics, quality and efficiency must work beautifully together. Your new wood burning stove is going to be the centre piece of your home for many years to come. It must be attractive to look at, kind to the environment and cost effective.

TermaTech continue to evolve with pride and care, taking form and function to a new level. Our stoves are easy to operate and suit a variety of budgets. We also make it our responsibility to reduce carbon emissions from the very beginning of the process. Many of our popular stoves are even DEFRA approved for smokeless zones.

Reasonable prices bring these beautiful designs to any home.

*The TT60 range
- a modest
homage to our
very first stove*

TT60S

The likeness with "La Grande Arche" is particularly marked when TT60 is clad with smooth diamond-honed stone sides, which in addition to their exclusive appearance have the advantage of the heat-storage properties of Brazilian soapstone. The resources of nature married to elegant styling.

The TT60 range

The TT60's minimalistic lines are in line with current trends, but take the mind back to the design of our first wood-burning stove - the TT1, with its focus on the simple essentials.

Design enthusiasts will recognise the inspiration we have taken from "La Grande Arche" in Paris, while the overall look of the stove continues the clean and elegant lines of the rest of our design range.

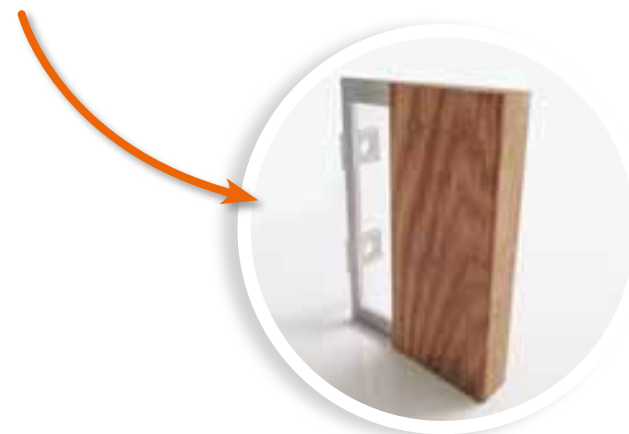
The receding lines in the cast iron door naturally lead the eye towards the living flames in the modern firebox. This feature is particularly emphasised in the soapstone variant, as the lines extend into the actual stone - a detail repeated in the elegant wooden casing of the discreet door handle.

The cast-iron door is easily opened with the smart handle in stainless steel and black-stained oak, and thanks to the magnetic two-point closure mechanism provides reliable operation without the wear caused by moving parts.

The handle is situated as standard at the base of the cast-iron door, but can be moved to the top if desired.

The firebox is 37 cm in width, and is so far the cleanest burning example we have developed, meeting the requirements of all known European standards. With an efficiency of 83%, TT60 matches the same high level as TermaTech's other models.

As an option, the handle in the TT60 range is offered in an exclusive oiled oak variant.



TT60

The TT60 basic model is characterised by simplicity and clean, harmonious lines. The textured finish of the cast-iron door with its receding sides naturally leads the eyes towards the living flames in the firebox. The details are further underlined by the thick 5 mm steel sides and top plate. The stainless steel trim adds

an extra dimension to the design, highlighting the stove's simple lines.

A reinterpretation of a design classic at an attractive price.

TT60W

TT60W is the wall-mounted woodburning stove in the TT60 range.

With its clean, minimalist design, it has been created for the classic modern home, where focus is on simplicity and function.

The TT60W is supplied with four adjustable feet. This means it can be mounted on a concrete slab or integrated into a concrete or brick feature.



A sleek and timeless look in cast iron

TT30 range:

The TT30 is a range of wood-burning stoves for real connoisseurs. The doors, top and combustion chamber are constructed from cast iron, an extremely robust material, that gives the stove a solid look and feel. Moreover, the stove is slimmer than our other models, meaning that it appears light despite the solid choice of material.

Design:

In terms of design, we have tried to create a stove with a sharp edge. Simple, but elegant. The characteristic inward-sloping edges on the door and the top place the focus on the flame picture and the lovely stainless steel handle completes the stylish look.

The vertical lines of the insulation material further underline the simplicity in the contemporary sleek Scandinavian design.

Functions:

The cast-iron door is closed by means of two magnets. This means that all movable wear parts are omitted from the closing mechanism. Easy operation is also a must, and the regulating handle, which controls all air supply, is therefore located between the door and the firewood storage compartment so that it is easy to operate.

The glass panel is equipped with an effective "air wash" that blows the convection air down the glass. This way, the formation of soot is minimised and the fantastic flame picture is maintained.

Furthermore, the TT30 is equipped with a fresh air connector whereby the fresh convection air can be extracted from outside and connected directly to the stove's air duct. This is often necessary in modern and new build properties which are well insulated and airtight.

TT30S

What is striking about the TT30S is its soapstone cladding; a natural material that stores the heat from the stove and releases it gradually after the fire has gone out.

The front is made of cast iron adding to the perfect design. A beautiful combination of two sturdy materials that look great together.



TT30

Elegant design, quality finish and easy operation are the most important characteristics of TermaTech's TT30. The door, top and fire chamber are made of cast iron, an extremely strong material that gives the stove a solid look.

The stove is also slimmer than many of our other models, which means that it has a light appearance despite the solid choice of materials.



The TermaTech TT30 range

TT30G

With glass on three sides, the TT30G provides a fantastic experience; allowing the flame to be enjoyed from several different angles. The design is simple, elegant and timeless.



TT30GS

TT30GS combines uncompromising functionality and design. The "side windows" in the soapstone are uniquely carved and polished out of one single piece of soapstone, so that the stove's elegant and slender lines are maintained without unnecessary joints in the stone. The doors, stove top and fire chamber base are made of cast iron and, as mentioned, the rest of the appliance is finished with soapstone.



*The TT21 range
- highest quality
at an attractive
price*

TT21RHS

TT21RHS is the top model in the TT21 range. The photos speak for themselves, but if we were to pick out any of the many highlights of this stove, it would be the generous amount of soapstone, and the clean and timeless lines. As standard, the TT21RHS is supplied with a practical steel door over the firewood compartment, but if your preference is for diamond-polished Brazilian soapstone, the stove is also available with plinth stones in the firewood compartment.

The textured surface of the cast iron, combined with the smooth surface of the stone, automatically leads the thoughts to the earthly elements, here beautifully united.



TT21RH

Slim and elegant - these two words sum up the TT21RH. The whole essence of the TT21RH is based on an increasing demand for a more elevated fireplace, which makes it easier to contemplate the beauty of the flames. The practical door to the wood compartment enables stove accessories to be stored on its inner side.

The TermaTech TT21 range - Timeless elegance

TT21 range:

The TT21 stove range satisfies all the requirements and desires which a modern user could ask for. Easy operation and smart cast-iron details, all packaged in a timeless and stylish Scandinavian design – and available at very a reasonable price.

Design:

There are six basic variants to choose from – with or without soapstone. On top of this, you can add details such as heat storage, a shaped glass hearth or a log store door with an option for integrated fire tools.

The elegant door handle emphasises the clean design. Combined with the unique closing mechanism on the cast-iron door, operated by means of heat-resistant magnets, this guarantees optimum ease of use and a long service life.

As an additional option, the handle in the TT21 range is also offered in black-lacquered stainless steel.

Functions:

Combustion is controlled by a discreet and easily operated regulator handle under the cast-iron door, while the large ash box and its door make disposing of the ash simple

and clean, when, rarely enough, it needs emptying.

The depth of the combustion chamber provides good, effective firing, while allowing for a large ember layer and preventing ash from blowing out.

The top plate, door, flue outlet and combustion chamber base are all made from cast iron, thus extending lifespan and enhancing stability.

In modern highly airtight homes, it may be necessary to connect a fresh air supply to the stove, as the amount of combustion air your stove needs may be insufficient if taken solely from the room.

All TT21 models can be directly connected to a fresh air supply from the combustion chamber by means of a fresh air connector and a fresh air kit. (Optional extra)

A further advantage of using external fresh air is that the stove does not use the home's heated air for combustion. In this way, the heated air stays in the home, thus increasing your comfort and saving you money.

TT21RS

The TT21RS wood-burning stove completes your experience of the elements. The crackling flames from the fire combine beautifully with the raw, rustic exterior of soapstone and bring to mind the primeval forces of nature. The unique, heat-retaining properties of the soapstone combine with the gentle shapes in the elegant, timeless cast iron door, which closes with the aid of two heat-resistant magnets. This means there is no need at all for moving parts in the door design, guaranteeing a long useful life and maintenance-free function.

TT21RS Black:

If you prefer the design of the TT21R but still want the excellent heat-retention qualities of the soapstone on the TT21RS, as a completely new and unique feature, we have now combined the two stoves by lacquering the soapstone in black.



TT21R

The TT21R is the result of five years of continuous product improvement.

The wood-burning stove's elliptical "core" is based on the DNA of the well-known, tried and tested TT20 range, but in this version it has been updated with a superb cast iron top with associated convection grille and cover, also in cast iron.

The gentle shapes are reflected in the elegant, timeless cast iron door, which closes with the aid of two heat-resistant magnets.

This means there is no need at all for moving parts in the door design, guaranteeing a long useful life and maintenance-free function.

TT21RL

Small details make a big difference. And that is also true of the TT21RL. The stove is just 10 cm lower in height than its big sister, the TT21R. This makes the stove more compact, which may be desirable where ceilings are low. At the same time, the wood compartment is screened by a blanking cover, giving the stove a sleek and elegant look.

Operation of the stove is so simple that anyone can quickly and easily become familiar with it – and therefore it is particularly suitable for rental holiday homes.



TT21RLS

Compact, rustic and timeless – three words which characterise the TT21RLS. The soapstone cladding is not just attractive and impressive, it also has a unique ability to absorb the heat from the fireplace and continue releasing it long after the fire has gone out. As on the other TT21 models, the door is made from 100% cast iron, which not only has a rustic appearance, but also perfectly matches the texture of the stone.

TT20 The centre
of the home...
for comfortable
living

TT20RS

Fitted with almost 80 kilos of rounded soapstone on the sides and top plate.

The lavish amount of soapstone isn't just a beautiful cover, it ensures even more heat is absorbed and subsequently released than in other smaller soapstone stoves.



TT20 range:
TermaTech TT20 is a range of stoves that combine the best operational comfort, with high product quality and sleek Scandinavian design.

And then there is the price. We have designed the TT20 to be a real 'people's stove' one of the most popular stoves on the market for the price. Naturally the stoves fulfil the latest and most stringent European requirements: the efficiency is even above 83%.

Seven models – all designed with care and manufactured out of high quality materials. Regardless of the model you choose, you can be sure of solid construction and well thought out design.

Flexible design:
Choose between straight or rounded steel sides, alternatively soapstone covering with straight or round sides. The soapstone can even be fitted retrospectively for a new look.

Easy to operate:
It is easy to control the air for combustion. An air regulator, discretely placed under the cover does it all. You can connect fresh air/outdoor air directly to the combustion chamber on the TT20, which may be necessary in newly built or newly renovated homes.

Practical ash drawer:
The ash drawer is large and easy to access when it, at rare intervals, must be emptied. A lid is included, so that you can carry the ash out safely.

Cast iron, where it makes a difference:
Cast iron in the bottom and the door frame means a long life-span and stability in the door.

Well thought out combustion chamber:
The deep combustion chamber ensures that there are flames in the centre, while at the same time minimising the risk of embers and ash falling out.

Cool handle:
The handle is ventilated and it's position means that it is always cool to the touch.

Wide range of accessories:
There is a wide range of accessories especially designed for the product range: Including a revolving and easily accessible door in the matching firetool set (available as an optional extra).



TT20

The range's slim basic model. The stove has straight steel sides lacquered in black or grey. For those who want all of the TT20 advantages for an economic price. Operation of the stove is so simple that anyone can quickly and easily become familiar with it.



TT20R

As the base model but equipped with rounded steel sides. The round sides create an adaptable unit that is suitable for both a straight wall or placing in a corner.



TT20S

Equipped with straight sides and top plate in soapstone. Soapstone absorbs the heat slowly and gives off the accumulated heat long after the fire has died out. Soapstone is a 100% natural product and its appearance varies from stove to stove.



TT20SA

If you love the look, feel and extra efficiency of soapstone but prefer a warmer look then this beautiful Indian sandstone is for you.

The characteristics of the Indian sandstone are every bit as good as the soapstone but the appearance is very different. The TT20SA is available in black with sandstone.



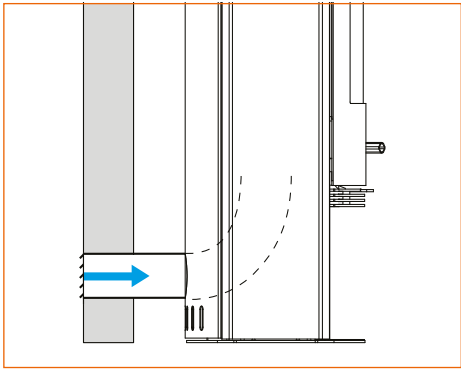
TT20Streamline

For those who want the advantages of the TT20 for the lowest possible investment. The design with its two free-standing legs is modern, light and yet reminiscent of the older cast-iron stoves. It gives you the latest technology combined with a classic appearance.



TT20Streamline R

Taking price, quality and features into consideration, there is scarcely a better alternative on the market. The stove's size and output are perfect for smaller rooms or holiday cottages. Many buyers like the option of storing wood in the compartment under the door, but if you prefer a more elegant and closed design, a blanking cover can be purchased for mounting over the firewood compartment.



Direct air connection kit

Newly built and very well insulated houses are often airtight. Here it may be necessary to supply external air to the room where the stove is located. With a TT10, TT20, TT21 TT22, TT30 or TT60 this air (also called combustion air) can be supplied directly to the stove's air ducts through the matching direct air connection kit.

You will avoid having to open windows or vents and also avoid wasting heat.

TermaTech TT20/TT21 accessories

A complete selection of beautiful accessories.

Give your new TT20/TT21 its own expression and make your daily life with the stove even easier. TermaTech has designed accessories for the TT20/TT21 range that perfectly suit the beautiful lines of the stoves; ensuring both aesthetics and ease of operation has been thought through from start to finish.



Fireplace set

Open the door and you have easy access to everything you need to operate your stove: a broom, a poker and a shovel. You will avoid having the space around your stove cluttered with accessories, as they are now an integrated part of the stove.

Wood compartment door

If you wish to complete the beautiful lines of the stove – and conceal the accessories you often use with the stove – a wood compartment door is the obvious choice. This door gives the stove a completely different look and hides your gloves and other accessories which you wish to keep out of sight.

Note: If the wood compartment is fitted with a door, do not use it to store flammable materials such as wood, firestarters or lighters.



Log grate

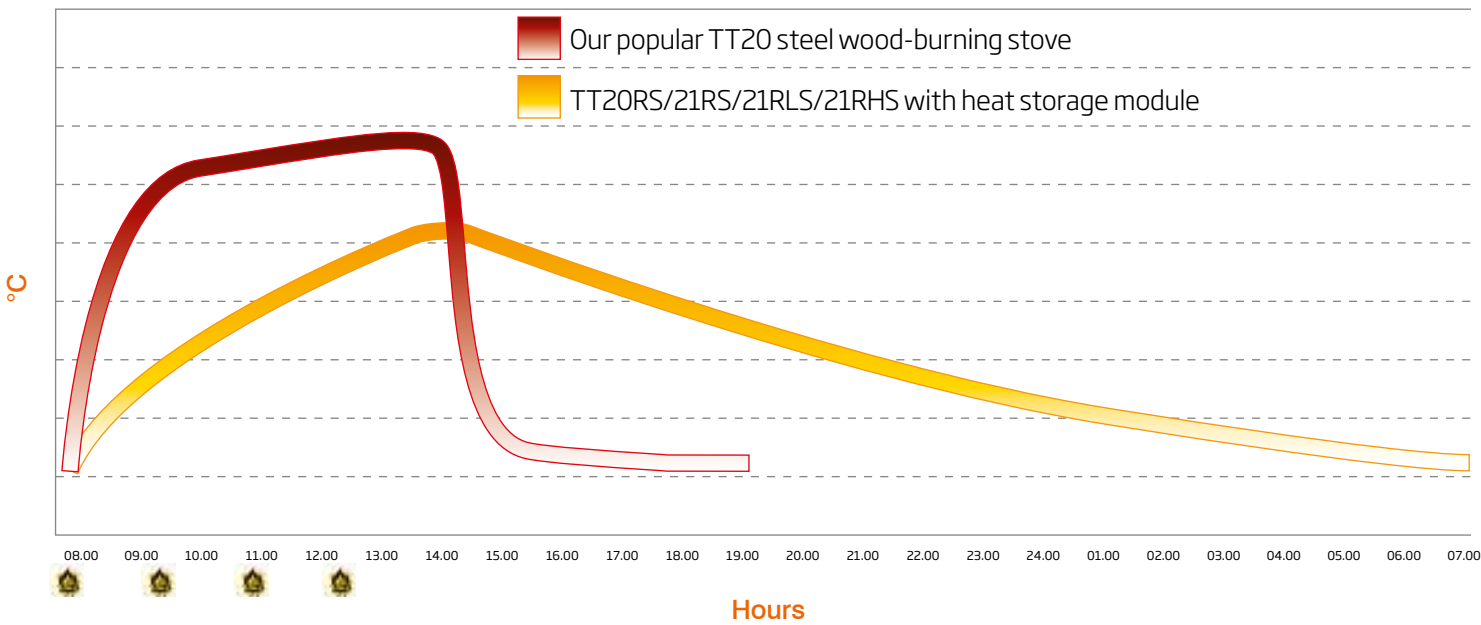
The log grate is an old invention that comes in a new and improved package. It ensures that neither the embers nor the wood fall out of the stove, even if you have put just a little too much wood in. It also minimises the risk of ash whirling out and ending up on the inside of the door.

Shaped glass hearth

The glass plate gives a lighter look and is easy to remove for cleaning. The accompanying adjustable feet must be mounted beneath the stove before using the shaped glass hearth.



Heat Storage



TT20RS/TT21RS/TT21RLS/TT21RHS with Heat Storage Module and Footing Stone

For TT20RS/21RS/21RLS/21RHS, we have developed a heat storage module in beautiful soapstone.*

The unique ability of the soapstone allows the heat to be stored for up to 13 hours after the last stoking.**

- Soapstone has the ability to collect the heat energy and release it slowly.
- The module consists of a platform and six soapstone parts that can be easily fitted onto your new TT20RS/21RS/21RLS/21RHS
- If you are already the happy owner of a TT20RS/21RS/21RLS/21RHS, your dealer can retrofit the heat storage module onto your stove.
- In total the stones weigh almost 100kg. The TT20RS/21RS/21RLS/21RHS currently has about 80kg of soapstone, with the heat storage module added, you get almost 180kg of pure heat storage.
- The diagram at the top of the page shows the heat storage difference of a standard steel stove and a TT20RS/21RS/21RLS/21RHS with heat storage.
- The steel stove heats up quickly, releases plenty of heat, but gets cold shortly after the flame has gone out.
- The soapstone absorbs plenty of heat energy and continues to gradually release it even after the fire has gone out.
- The footing stone, which completes the overall look, can be retro-fitted onto both the TT20S, TT20RS, TT21RS and the TT21RHS.
- The footing stone does not become warm because of its position, but it gives the stove a beautiful appearance.

* Please be aware that soapstone is a 100 % natural material and every single stone is unique. Therefore, there will be differences in the structure and shade of the stones.
** The measurement results are based on tests conducted in a 70sqm room with a standard ceiling height and insulation.

Heat storage module

TT20RS/21RS/
21RLS/21RHS

Footing stone





TT22H

TermaTech TT22 range

TT22 range:

Heat lovers will love TermaTech's TT22 range. Timeless Danish design combined with high quality build and environmentally friendly combustion. Single handle air control makes it simple to manage the level of heat output and the flame height. You can burn the stove slowly with a 5kW heat output or work the stove harder with a high output, around 10kW. Options include: black or grey, steel or soapstone. The efficiency is even above 82%.

Cool handle:

The handle is ventilated and it's position means that it is always cool to the touch so you avoid burning your fingers.

Flexible design:

If you want to change the look of your stove once installed then the soapstone cladding can be added retrospectively to replace the steel and maximise the conversion of your fuel into heat. We have high models, low models and a unique variant which almost seems to hover in the air, with a pedestal foot. And if you should at any time want to give your stove a make-over, the cladding on many models can be changed from steel to soapstone, or vice versa. Common to all TT22 models is that they can be connected to the flue from the top or from the rear.

Easy to operate:

You can connect a direct air feed kit to the combustion chamber on the TT22 which may be necessary in new build properties or newly renovated homes to meet the building regulations.

Practical ash drawer:

The ash drawer is large and easy to access when it needs emptying. A lid is included so that the ash can be removed safely.

Cast iron, where it makes a difference:

Cast iron at the base of the chamber and a cast iron door ensures a long life for your stove and stability when the stove is under fire.

Well thought out combustion chamber:

The deep combustion chamber centralises the flames in the stove for the perfect flame picture minimising the risk of embers or ash falling from the stove. They have a full 57 cm of width, allowing you to use logs of up to 50 cm without placing them diagonally.



Shaped glass hearth



TT22HST



TT22R



TT22RP

TermaTech Serious heat never looked so good

TT22RP

TT22RP is part of the TT22 range, but is distinguished by the special lightness of its appearance. The panoramic view of the flames inside the stove, combined with the wide foot gives the stove stability, but at the same time a harmony of overall design. The stove's external sides are rounded, so the impression of lightness is reinforced by the softness of the forms.

The stove almost appears to hover in the air, in large part due to the pedestal, which has an integrated fresh air inlet, easily activated.

Together with the pedestal, the wide cast-iron foot guarantees the stove's 100% stability, but it can also be adjusted to match any unevenness in the floor.

The TT22RP is unique in appearance, due to the combination of large firebox, compact cast-iron design, wide panoramic viewing area and elegant lightness.



TT22

TT22 is easy to operate, with a stay cool handle. The beautiful design is built to last.

If you are looking for a beautiful contemporary stove with a large heat output then please visit your local TermaTech stove dealer.



TT22S

Your new beautiful heating unit, equipped with top plate and straight sides in soapstone.

Soapstone absorbs the heat slowly and gives off the accumulated heat long after the fire has died out.

Soapstone is a 100% natural product and its appearance varies from stove to stove.



TT22R

The cast iron top and the rounded sides compliment the front's soft lines – the result is a beautiful appliance.

Underneath the fire chamber there is space to store firewood, and the ventilated "cool touch" handle means that you will not burn yourself when adding firewood to the fire.



TT22H

TT22H is built on the same ingenious combustion chamber as the other models in the range and thus you are assured of mesmerising and effective combustion. The extra height has been added at the bottom where the firewood storage compartment is now closed off by an attractive cover with soft-touch magnetic closure.



TT22HS

The TT22HS offers all the best features from the world of wood-burning stoves. Some will say it is large and heavy, others will say it is attractive and elegant, but nobody can deny that it is a fantastic piece of furniture in its own right, wherever it is placed.



TT22HST

HST stands for Heat Storage and means that this stove is able to store heat for a longer time.

4 large soapstone blocks are placed beneath the top stone, which also stores the heat from the stove.

Like the other TT22 stoves, the spacious fire chamber, with a total width of 57 cm, allows you to burn both small and large pieces of firewood.

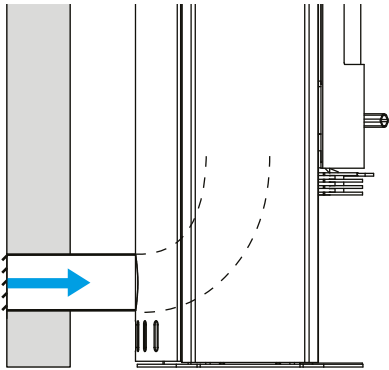
TT10
panoramic
view with
character

The elegant TT10 range is comprised of three different models, all of which have quality, construction and design on a par with stoves that are significantly more expensive.

With the TT10 you get a proven woodburning stove, which has the same brilliant air control system as our newest models. The high, curved, panoramic front allows the fire to be enjoyed from different angles. The door has a two-point closure, with cast iron in the bottom and in the door that ensures stability and a long life span.



Combustion wise the TT10 is exceptional. The TT10 is adjusted quickly and easily with the aid of a single control grip. In newly built and especially well-insulated houses, it may be necessary to supply external air to the room where the stove is mounted. All TT10 models can be directly connected to fresh air via the stove's air duct, so heat is not wasted through open windows or vents.



Direct air connection kit

Newly built and very well-insulated houses are often airtight. Here it may be necessary to supply external air to the room where the stove is mounted. With a TT10, TT20, TT21, TT22, TT30 & TT60 this air (also called combustion air) can be supplied directly to the stove's air ducts through the matching direct air connection kit. You will avoid having to open windows or vents and also avoid wasting heat.

TT10S

Equipped with an elegant and solid soapstone covering. As soapstone is a natural product, no two stoves are completely alike – your stove is totally unique. Soapstone absorbs the heat slowly and gives off the accumulated heat long after the fire has died out.



The **TermaTech** TT10 range

TT10G

The two extra glass panels on the sides of the stove allow the fire to be enjoyed from any angle. The TT10G is the shining focal point in any room.



TT10

The base model in the range. Equipped with rounded steel sides. An accomplished design with the curved panoramic front means the fire can be viewed from several angles.



*All
you need
is fire...*

TermaTech is a full service supplier of everything for the woodburning stove.

At your professional stove dealer you will find TermaTech's wide range of accessories for your stove. Shown below is only a selection of TermaTech's range of accessories, which includes: hearths, fire tools, wood baskets, firestarters, extractors and much more.

See more on www.termatech.com

Serrated Tongs

With just one hand you can easily and safely position firewood in your stove or fireplace. The perfect tool for "the person who has everything – including a wood-burning stove".



Glass cleaner

Keep your wood-burning stove's glass clean. Effectively remove burnt-on soot from the glass. Spray on and leave it to work – wipe off with ordinary kitchen towel. Easy and effective without scratching.



Firewood cart

Stack your firewood in an elegant way with our smart firewood cart, which is practical and transportable. Available in white and black.



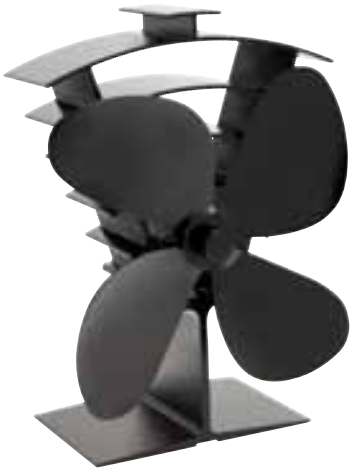
Firetool "Edge 3"

Wall hanging tool set to complete the contemporary look of your stove and keep the look of your stove beautifully simple.



Heat power

Now you can get even more out of the heat from your wood burning stove. Heat power is a heat-driven fan located above your stove. The energy in the heat is converted into electric current. The current drives the fan, which sends the hot air out into the living room. No batteries and no power supply – just light the stove and before long, your heat power will be working for you.



Biofirestarters

Wax covered wood shaving that effortlessly light your stove with just one firelighter.



Rubber or organic leather cylinder for firestarters

Practical storage for your firestarters.



TermaTech accessories

Woodrack

Woodrack firewood shelving consists of a strong, powder-coated steel construction. The basic module is one metre wide and can be extended with as many sections as you require.



Lighter

With its unique "welding beam", this lighter makes lighting up easy. It is easy to refill and is fitted with a rubber handle and child-proofing.



Achieve natural heat storage with soapstone



Soapstone is a pure, natural material and the appearance varies from stove to stove.

About 2.7 billion years ago soapstone, which is a mineral type of rock consisting primarily of talc, was created in the subsurface. Talc absorbs and conducts heat in an exceptional way, which makes soapstone an ideal choice for wood-burning stoves.

Soapstone absorbs the heat from the wood-burning stove so that the heat is stored and released long after the flame has gone out. This means the heat from the

wood-burning stove lasts much longer, is more evenly distributed and feels more comfortable in comparison to a standard convection or radiation stove.

The amount of soapstone is the deciding factor as to how much heat can be accumulated. The more soapstone a wood-burning stove is clad with, the more heat that is stored and released.

From subsurface to cladding

The soapstone is quarried in "Rio das Velhas" in Brazil, where the stone is cut out in large blocks and brought up from the subsurface. When the stone has been processed, it is given a water/diamond polish, which makes the soapstone used by TermaTech unique.

The polishing accentuates the stones colours, lines and veins and makes the surface silky-smooth, which improves the stone's resistance to dirt.

Contrary to other types of stone, soapstone has a soft and variegated surface, which makes it an easy-maintenance material if scratches should appear. At termatech.com you will find instructions on how easy it is to maintain and repair soapstone allowing its unique appearance to be preserved.

Since soapstone is a natural material, there is a natural variation in the structure and surface of the stone, which makes each stone and wood-burning stove unique.

Soapstone - Brazil's hidden treasure

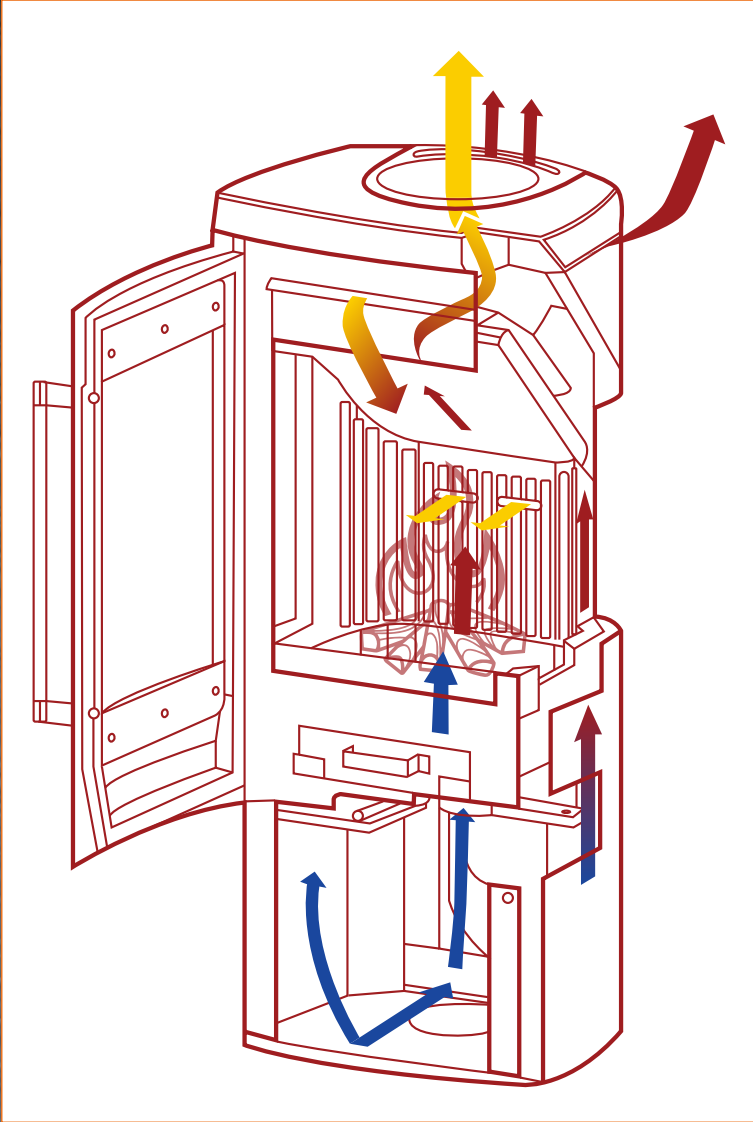


Air flow

Most of TermaTech's wood-burning stoves are convection stoves. This means that there is an inner shell and an outer shell. The air between the two shells quickly becomes heated, rises upward and is distributed faster throughout the entire room. The stove takes in cool air from the bottom, heats it up and then the air is distributed at the top of the stove.

The difference between a well-functioning convection stove and a radiant heater is that with a convection stove you achieve a better and more uniform heat distribution in the room.

The convection stove is also cooler on the outer surfaces.



General information about the TT models

- 5 years warranty*
- Tested and approved by recognised European testing institutes
- Effective and high build quality
- Constructed with a view to easy and error-free operation
- Constructed so that there is a minimum of maintenance and the wearing parts are easy to replace
- Convection stoves, thus ensuring better heat distribution. Heats up between 30 and 160m²
- Equipped with an efficient airwash that keeps the glass clean
- Equipped with cast iron frames in the door and bottom of the combustion chamber
- Equipped with stainless steel door handles
- Most stoves are available in metallic grey or metallic black
- Can be connected from the back or the top
- Can be purchased from your professional stove shop, which ensures you receive the correct advice, optimal guidance and proper installation

The qualities above assume that the user follows the firing guidelines and solely uses clean and dry firewood in the stove.

On TermaTech's website you can easily locate your closest dealer. Here you will find usage instructions, the statutory test certificate and all technical data on the stoves.

We wish you and your family many cosy and warm times in the company of your new TermaTech woodburning stove.

*Please read our conditions for "5 years warranty" in our user and mounting manual.

Member of:

DAPO



Approvals and environment

TermaTech's woodburning stoves are approved by and meet the most stringent requirements in Europe. They are approved by, among others, Rhein Ruhr Feuerstätten Prüfstelle and The Danish Technological Institute who have completed the CE-approval (EN13240), the Austrian standard "15A" and the German standard "DIN+".

The stoves are also tested and approved by SINTEF, which is a Norwegian testing institute and VKF, which is a Swiss institute. In England, all of the stoves are tested and approved by HETAS. TT20, TT21, TT22, TT30 and TT60 also have DEFRA approval, a distinction reserved for only the cleanest burning stoves on the market.

See the technical data for further details.



TT10



TT10G



TT10S



TT20Streamline



TT20Streamline R



TT20



TT20R



TT20SA



TT20S



TT20RS



TT20RS
+ Footing stone



TT20RS
+ Heat storage module
+ Footing stone



TT21RL



TT21R



TT21RH



TT21RLS



TT21RS



TT21RHS



TT22



TT22R



TT22RP



TT22H



TT22S



TT22HS



TT22HST



TT30



TT30G



TT30GS



TT30S



TT60



TT60S



TT60W

TT10 range	TT10	TT10S	TT10G
Energy efficiency class	A ⁺	A ⁺	A ⁺
Nominal effect in kW	6	6	6
Operating range in kW	3 - 8	3 - 8	3 - 8
Efficiency %	82	82	82
Heats m²	30 - 140	30 - 140	30 - 140
Weight in kg	116	190	116
Colour: Black (Item number)	S01-400	S01-410	S01-440
Colour: Grey (Item number)	○	○	○
Air connection kit available	●	●	●
Convection stove	●	●	●
Airwash	●	●	●
Ash drawer	●	●	●
Control handle	1	1	1
Connection top/rear	●	●	●
Warranty, up to years	5	5	5
Flue pipe connection diameter	150	150	150
Combustion chamber width/depth	340/309	340/309	340/309
Accessories	Soapstone top	○	Soapstone top
Approvals	CE / EN13240, HETAS, 15A, VKF, SINTEF, DINplus		

TT20 range	TT20	TT20R	TT20S / TT20SA	TT20RS	TT20Streamline / TT20Streamline R
Energy efficiency class	A ⁺	A ⁺	A ⁺	A ⁺	A ⁺
Nominal effect in kW	5	5	5	5	5
Operating range in kW	3 - 7	3 - 7	3 - 7	3 - 7	3 - 7
Efficiency %	83.4	83.4	83.4	83.4	83.4
Heats m²	30 - 120	30 - 120	30 - 120	30 - 120	30 - 120
Weight in kg	116	118	154 / 139	173	102 / 110
Colour: Black (Item number)	S01-600	S01-602	S01-618 / S01-626	S01-620	S01-606 / S01-608
Colour: Grey (Item number)	S01-601	S01-603	S01-619	S01-621	○
Air connection kit available	●	●	●	●	●
Convection stove	●	●	●	●	●
Airwash	●	●	●	●	●
Ash drawer	●	●	●	●	●
Control handle	1	1	1	1	1
Connection top/rear	●	●	●	●	●
Warranty, up to years	5	5	5	5	5
Flue pipe connection diameter	150	150	150	150	150
Combustion chamber width/depth	340/271	340/271	340/271	340/271	340/271
Accessories	Lower door, fireplace set, log grate, soapstone top, Heat storage.				
Approvals	CE / EN13240, HETAS, DEFRA (Smokeless zones), 15A, VKF, SINTEF, DINplus, BimSchV 1+2				

TT21 range	TT21R	TT21RS	TT21RH	TT21RHS	TT21RL	TT21RLS
Energy efficiency class	A ⁺	A ⁺	A ⁺	A ⁺	A ⁺	A ⁺
Nominal effect in kW	5	5	5	5	5	5
Operating range in kW	3 - 7	3 - 7	3 - 7	3 - 7	3 - 7	3 - 7
Efficiency %	83.4	83.4	83.4	83.4	83.4	83.4
Heats m²	30 - 120	30 - 120	30 - 120	30 - 120	30 - 120	30 - 120
Weight in kg	120	176	129	185	119	170
Colour: Black (Item number)	S01-630	S01-632	S01-636	S01-638	S01-628	S01-634
Colour: Grey (Item number)	○	S01-633	○	○	○	○
Air connection kit available	●	●	●	●	●	●
Convection stove	●	●	●	●	●	●
Airwash	●	●	●	●	●	●
Ash drawer	●	●	●	●	●	●
Control handle	1	1	1	1	1	1
Connection top/rear	●	●	●	●	●	●
Warranty, up to years	5	5	5	5	5	5
Flue pipe connection diameter	150	150	150	150	150	150
Combustion chamber width/depth	340/271	340/271	340/271	340/271	340/271	340/271
Accessories	Wood compartment door, fireplace set, log grate, Heat storage.					
Approvals	CE / EN13240, HETAS, DEFRA (Smokeless zones), 15A, VKF, SINTEF, DINplus, BimSchV 1+2					

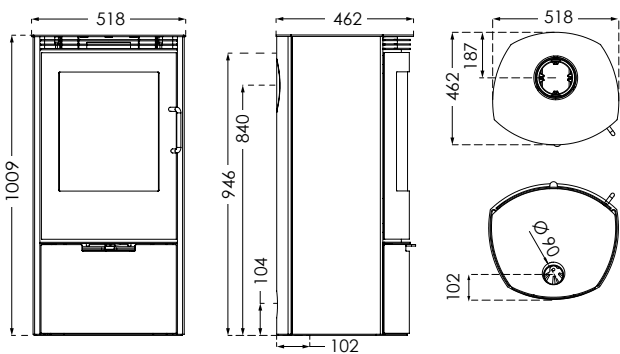
TT22	TT22S	TT22R / TT22RP	TT22H	TT22HS	TT22HST	TT22 range
A ⁺	A ⁺	A ⁺	A ⁺	A ⁺	A ⁺	Energy efficiency class
7,5	7,5	7,5	7,5	7,5	7,5	Nominal effect in kW
5-10	5-10	5-10	5-10	5-10	5-10	Operating range in kW
82	82	82	82	82	82	Efficiency %
40 - 160	40 - 160	40 - 160	40 - 160	40 - 160	40 - 160	Heats m²
168	202	168 / 205	194	251	322	Weight in kg
S01-640	S01-642	S01-648 / S01-654	S01-644	S01-646	S01-650	Colour: Black (Item number)
S01-641	S01-643	○	S01-645	S01-647	S01-651	Colour: Grey (Item number)
●	●	●	●	●	●	Air connection kit available
●	●	●	●	●	●	Convection stove
●	●	●	●	●	●	Airwash
●	●	●	●	●	●	Ash drawer
1	1	1	1	1	1	Control handle
●	●	●	●	●	●	Connection top/rear
5	5	5	5	5	5	Warranty, up to years
150	150	150	150	150	150	Flue pipe connection diameter
570/300	570/300	570/300	570/300	570/300	570/300	Combustion chamber width/depth
TT22S + TT22HS: Cookingplate kit.						Accessories
CE / EN13240, HETAS, DEFRA (Smokeless zones), 15A, VKF, SINTEF, DINplus, BimSchV 1+2						Approvals

TT30	TT30G	TT30S	TT30GS	TT30 range
A ⁺	A ⁺	A ⁺	A ⁺	Energy efficiency class
5	5	5	5	Nominal effect in kW
3 - 7	3 - 7	3 - 7	3 - 7	Operating range in kW
81	81	81	81	Efficiency %
30 - 120	30 - 120	30 - 120	30 - 120	Heats m²
128	126	155	153	Weight in kg
S01-730	S01-732	S01-734	S01-736	Colour: Black (Item number)
○	○	○	○	Colour: Grey (Item number)
●	●	●	●	Air connection kit available
●	●	●	●	Convection stove
●	●	●	●	Airwash
●	●	●	●	Ash drawer
1	1	1	1	Control handle
●	●	●	●	Connection top/rear
5	5	5	5	Warranty, up to years
150	150	150	150	Flue pipe connection diameter
320/236	320/236	320/236	320/236	Combustion chamber width/depth
Set of fire irons and soapstone top.				Accessories
CE/EN13240				Approvals

TT60	TT60S	TT60W	TT60 range
A ⁺	A ⁺	A ⁺	Energy efficiency class
6	6	6	Nominal effect in kW
4 - 8	4 - 8	4 - 8	Operating range in kW
83	83	83	Efficiency %
30 - 120	30 - 120	30 - 120	Heats m²
143	178	116	Weight in kg
S01-670	S01-672	S01-674	Colour: Black (Item number)
○	○	○	Colour: Grey (Item number)
●	●	●	Air connection kit available
●	●	●	Convection stove
●	●	●	Airwash
●	●	●	Ash drawer
2	2	2	Control handle
● / ●	● / ●	○ / ●	Connection top/rear
5	5	5	Warranty, up to years
150	150	150	Flue pipe connection diameter
380 / 260	380 / 260	380 / 260	Combustion chamber width/depth
Unpainted oak handle.			Accessories
CE / EN13240, HETAS, 15A, VKF, SINTEF, DINplus			Approvals

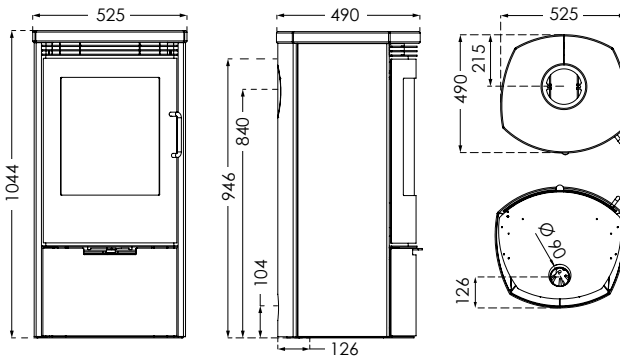
NB! All height dimensions are without adjusting feet. Measurements are in mm.

TT10



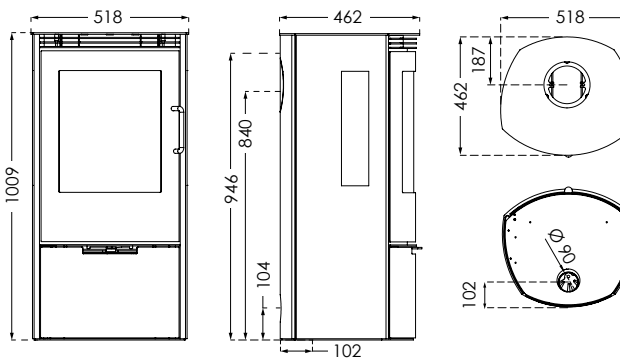
Weight in kg 116

TT10S



Weight in kg 190

TT10G



Weight in kg 116

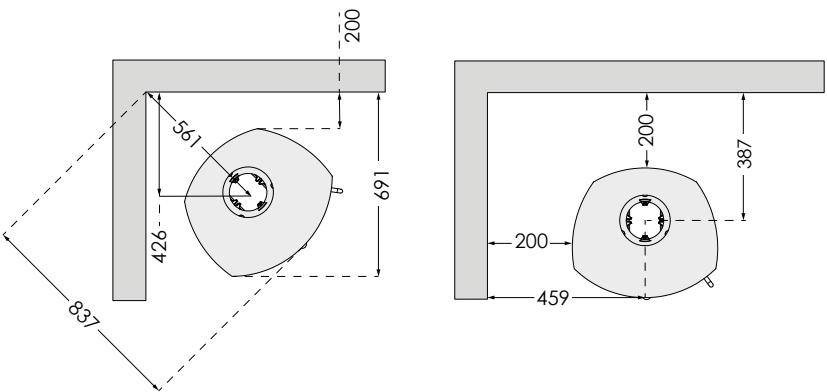
Non-insulated and half-insulated flue

TT10

Nominal effect in kW	6
Operating range in kW	3 - 8
Efficiency rate %	82
Heats sqm	30 - 140

In order to avoid discolouration of painted and treated surfaces, TermaTech recommends the same distance from flammable materials as for non-flammable materials. This distance increases the convection itself around the stove and also eases cleaning.

All distances relate solely to the distance of the stove from flammable materials. No account has been taken of national requirements for the use of stove flues or their distance from flammable materials.



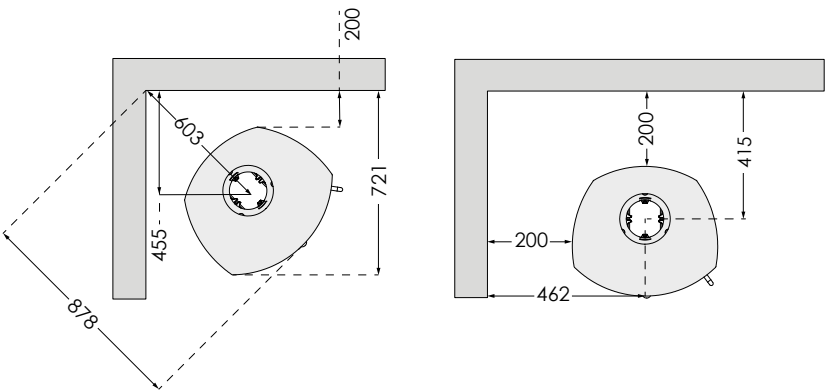
Non-insulated and half-insulated flue

TT10S

Nominal effect in kW	6
Operating range in kW	3 - 8
Efficiency rate %	82
Heats sqm	30 - 140

In order to avoid discolouration of painted and treated surfaces, TermaTech recommends the same distance from flammable materials as for non-flammable materials. This distance increases the convection itself around the stove and also eases cleaning.

All distances relate solely to the distance of the stove from flammable materials. No account has been taken of national requirements for the use of stove flues or their distance from flammable materials.



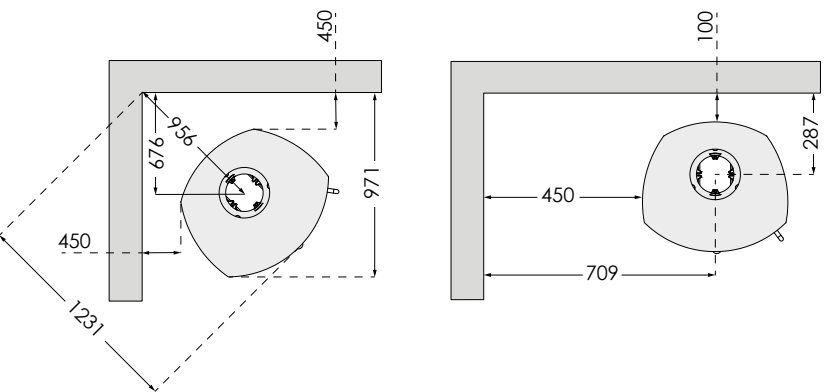
Non-insulated and half-insulated flue

TT10G

Nominal effect in kW	6
Operating range in kW	3 - 8
Efficiency rate %	82
Heats sqm	30 - 140

In order to avoid discolouration of painted and treated surfaces, TermaTech recommends the same distance from flammable materials as for non-flammable materials. This distance increases the convection itself around the stove and also eases cleaning.

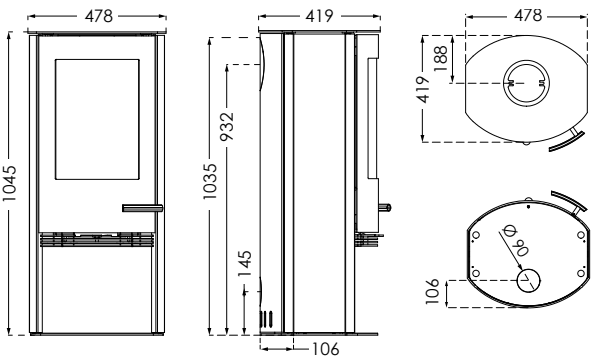
All distances relate solely to the distance of the stove from flammable materials. No account has been taken of national requirements for the use of stove flues or their distance from flammable materials.



TT20 / TT21 range · Technical specifications

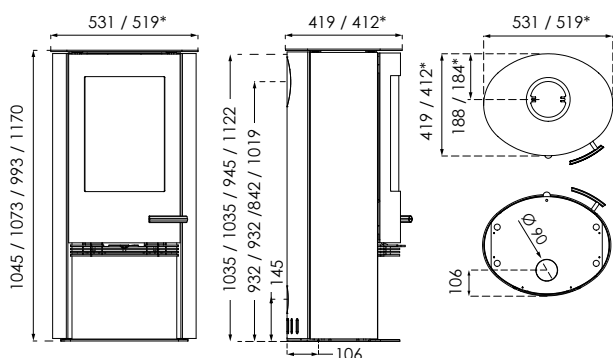
NB! All height dimensions are without adjusting feet. Measurements are in mm.

TT20



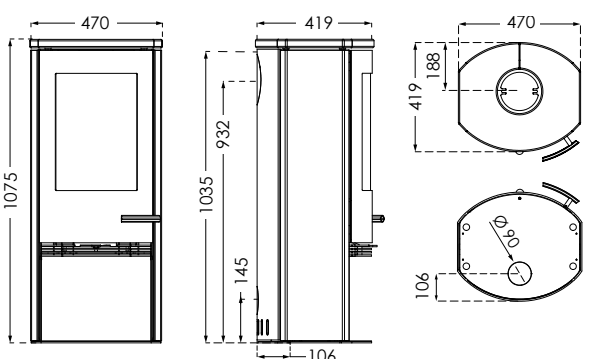
Weight in kg 116

TT20R/TT21R/TT21RL/TT21RH



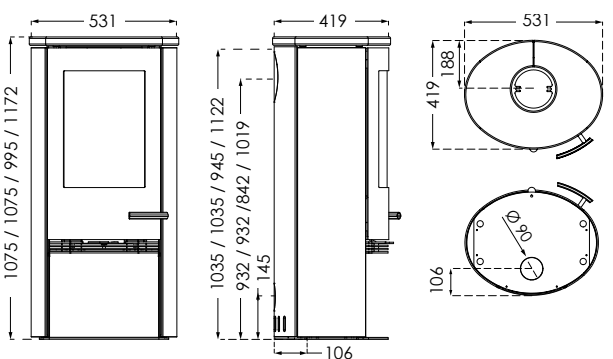
Weight in kg 118 / 121 / 119 / 129

TT20S



Weight in kg 154

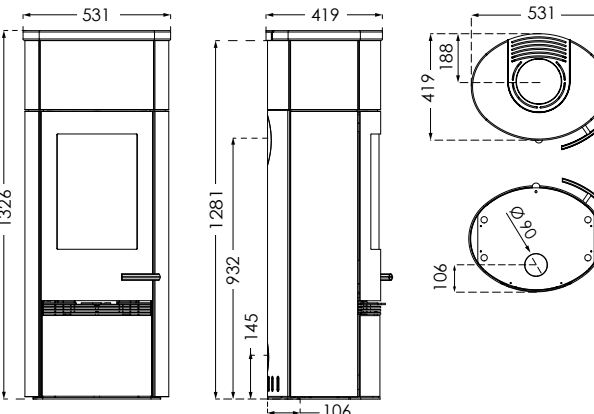
TT20RS/TT21RS/TT21RLS/TT21RHS



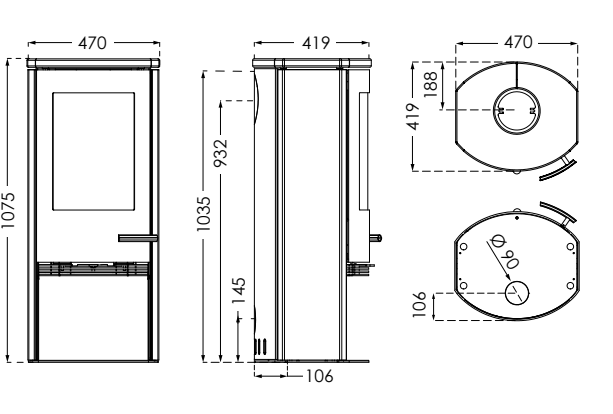
Weight in kg 173 / 176 / 170 / 185
Footing stone +30 kg

TT20RS/TT21RS + Heat storage module
+ Footing stone

TT20SA

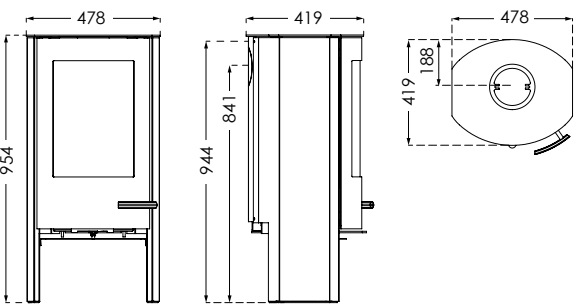


Weight in kg 302 / 305



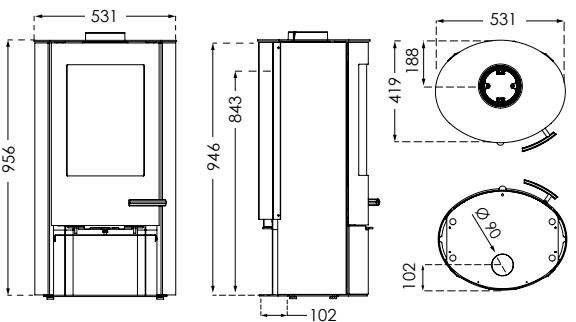
Weight in kg 139

TT20Streamline



Weight in kg 102

TT20Streamline R



Weight in kg 110

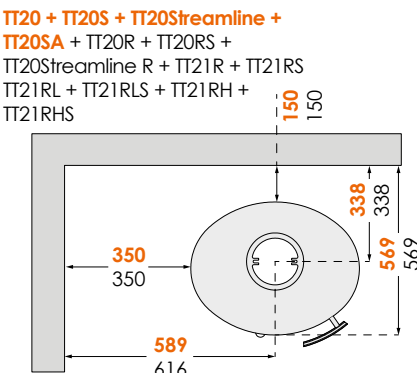
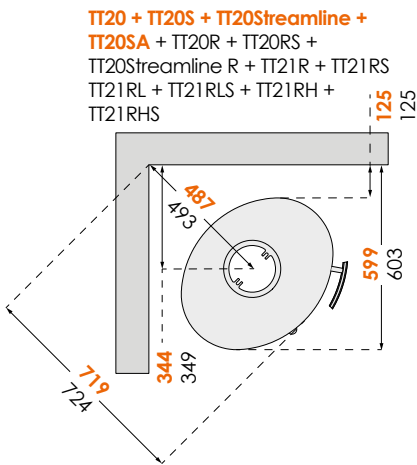
Non-insulated flue

Nominal effect in kW	5
Operating range in kW	3 - 7
Efficiency rate %	83.4
Heats sqm	30 - 120

In order to avoid discolouration of painted and treated surfaces, TermaTech recommends the same distance from flammable materials as for non-flammable materials. This distance increases the convection itself around the stove and also eases cleaning.

All distances relate solely to the distance of the stove from flammable materials. No account has been taken of national requirements for the use of stove flues or their distance from flammable materials.

TT20 / TT21 range



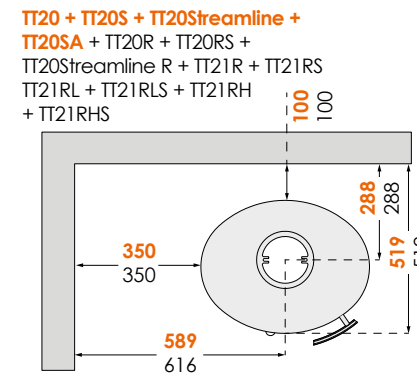
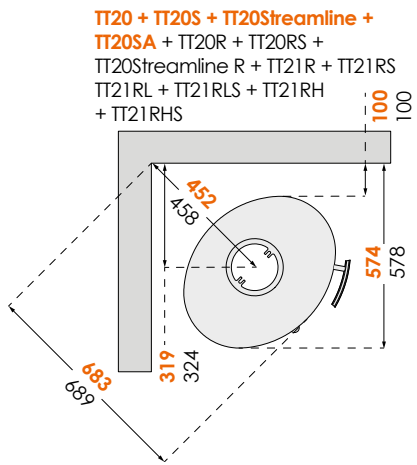
Half-insulated flue

Nominal effect in kW	5
Operating range in kW	3 - 7
Efficiency rate %	83.4
Heats sqm	30 - 120

In order to avoid discolouration of painted and treated surfaces, TermaTech recommends the same distance from flammable materials as for non-flammable materials. This distance increases the convection itself around the stove and also eases cleaning.

All distances relate solely to the distance of the stove from flammable materials. No account has been taken of national requirements for the use of stove flues or their distance from flammable materials.

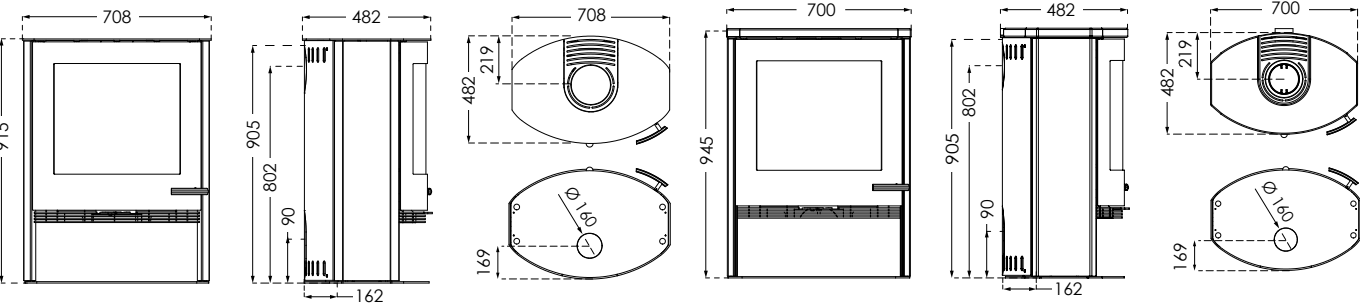
TT20 / TT21 range



NB! All height dimensions are without adjusting feet. Measurements are in mm.

TT22

TT22S

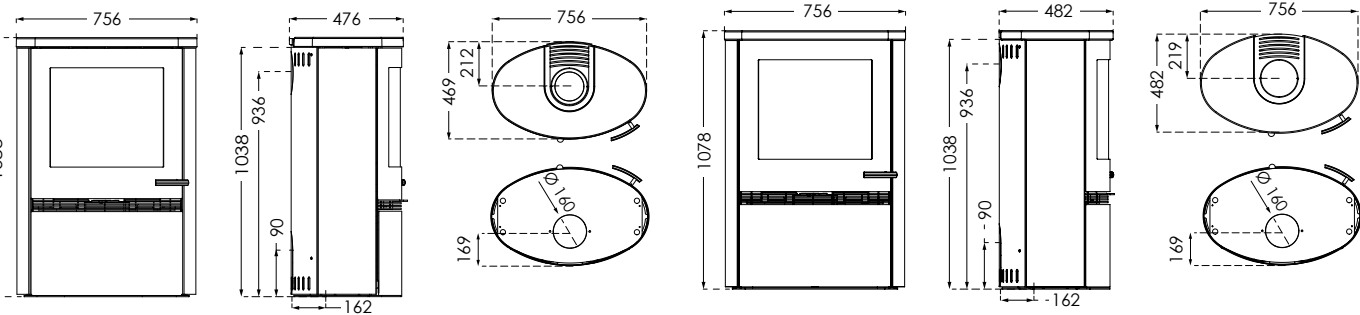


Weight in kg 168

Weight in kg 202

TT22H

TT22HS

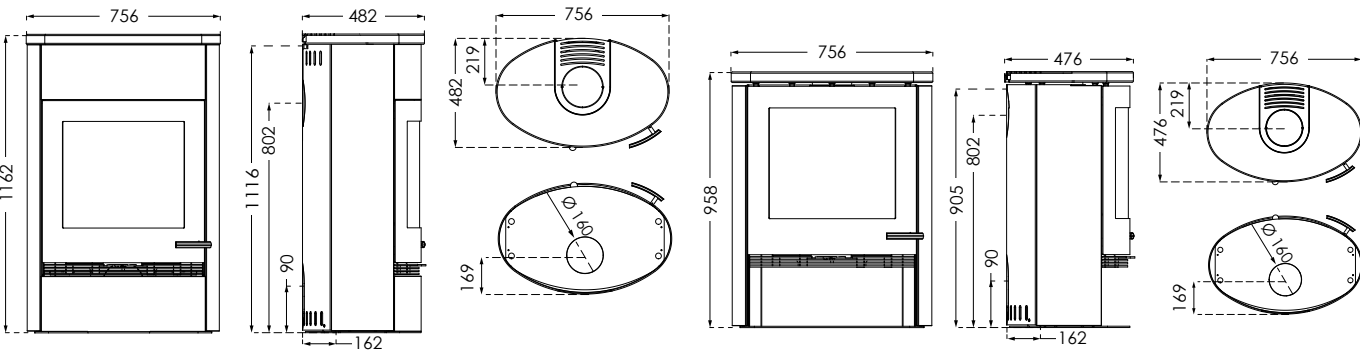


Weight in kg 194

Weight in kg 251

TT22HST

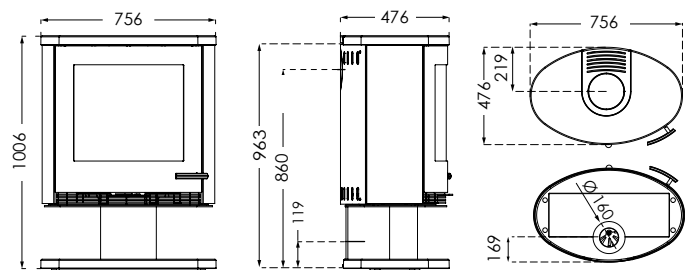
TT22R



Weight in kg 322

Weight in kg 168

TT22RP



Weight in kg 205

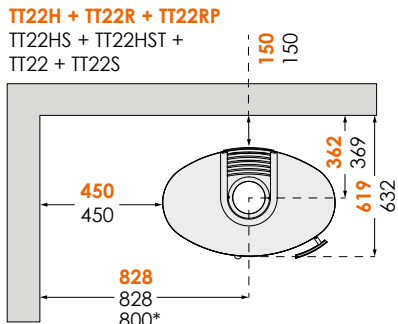
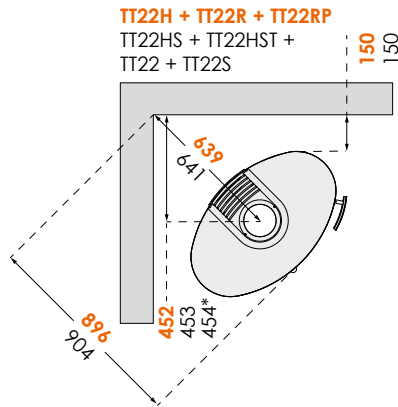
Non-insulated flue

TT22 range

Nominal effect in kW	7,5
Operating range in kW	5 - 10
Efficiency rate %	82
Heats sqm	40 - 160

In order to avoid discolouration of painted and treated surfaces, TermaTech recommends the same distance from flammable materials as for non-flammable materials. This distance increases the convection itself around the stove and also eases cleaning.

All distances relate solely to the distance of the stove from flammable materials. No account has been taken of national requirements for the use of stove flues or their distance from flammable materials.



*Applies to models: TT22 + TT22S

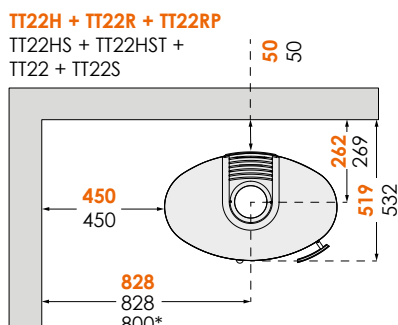
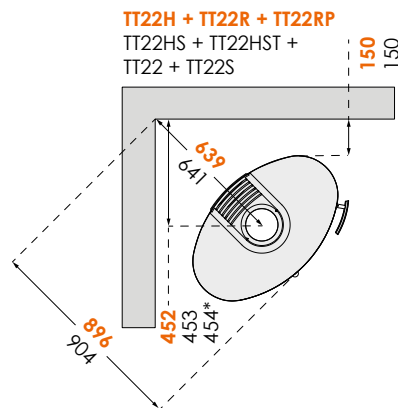
Half-insulated flue

TT22 range

Nominal effect in kW	7,5
Operating range in kW	5 - 10
Efficiency rate %	82
Heats sqm	40 - 160

In order to avoid discolouration of painted and treated surfaces, TermaTech recommends the same distance from flammable materials as for non-flammable materials. This distance increases the convection itself around the stove and also eases cleaning.

All distances relate solely to the distance of the stove from flammable materials. No account has been taken of national requirements for the use of stove flues or their distance from flammable materials.

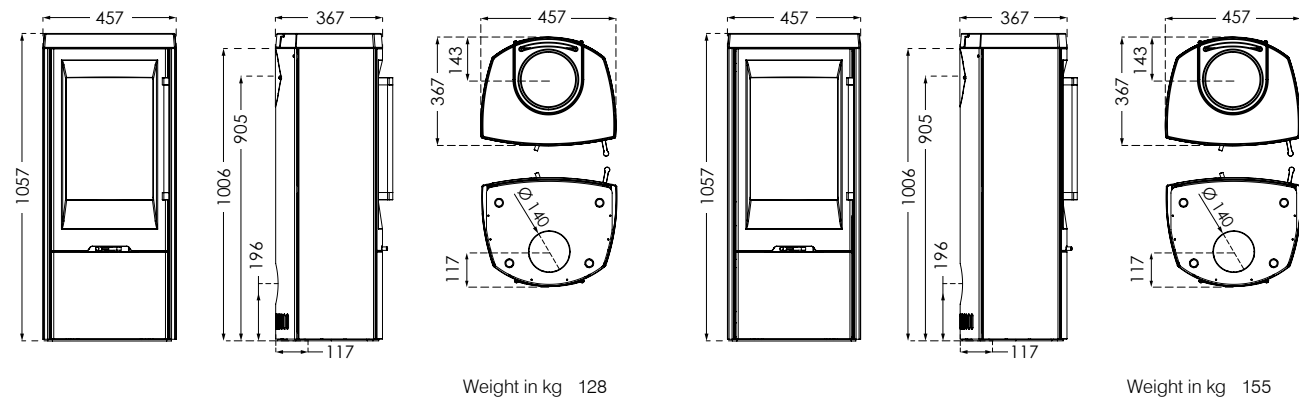


*Applies to models: TT22 + TT22S

NB! All height dimensions are without adjusting feet. Measurements are in mm.

TT30

TT30S



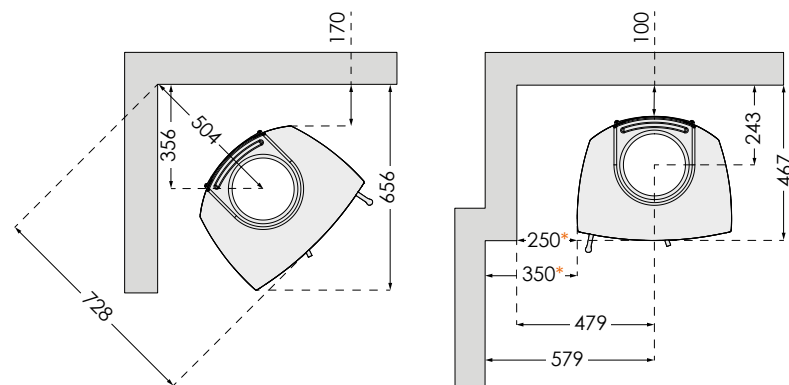
Non-insulated and half-insulated flue

TT30 · TT30S

Nominal effect in kW	5
Operating range in kW	3 - 7
Efficiency rate %	81
Heats sqm	30 - 120

In order to avoid discolouration of painted and treated surfaces, TermaTech recommends the same distance from flammable materials as for non-flammable materials. This distance increases the convection itself around the stove and also eases cleaning.

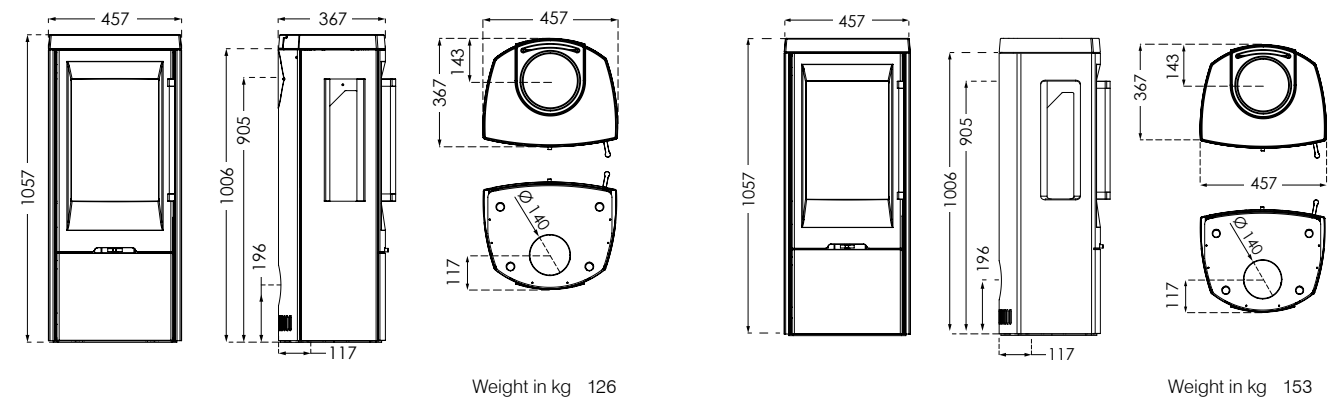
All distances relate solely to the distance of the stove from flammable materials. No account has been taken of national requirements for the use of stove flues or their distance from flammable materials.



* Distance to side wall min. 250mm up to the front of the stove, subsequently min. 350mm.

TT30G

TT30GS



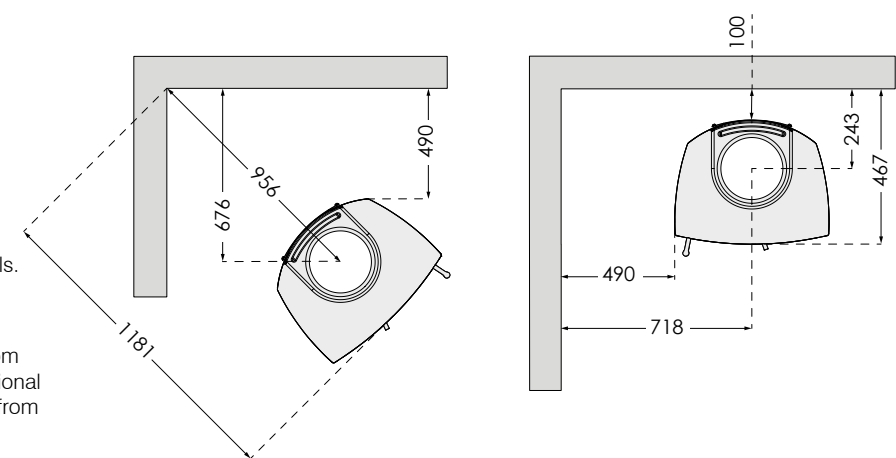
Non-insulated and half-insulated flue

TT30G · TT30GS

Nominal effect in kW	5
Operating range in kW	3 - 7
Efficiency rate %	81
Heats sqm	30 - 120

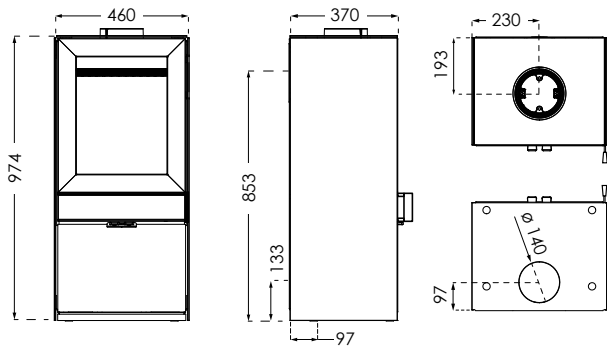
In order to avoid discolouration of painted and treated surfaces, TermaTech recommends the same distance from flammable materials as for non-flammable materials. This distance increases the convection itself around the stove and also eases cleaning.

All distances relate solely to the distance of the stove from flammable materials. No account has been taken of national requirements for the use of stove flues or their distance from flammable materials.



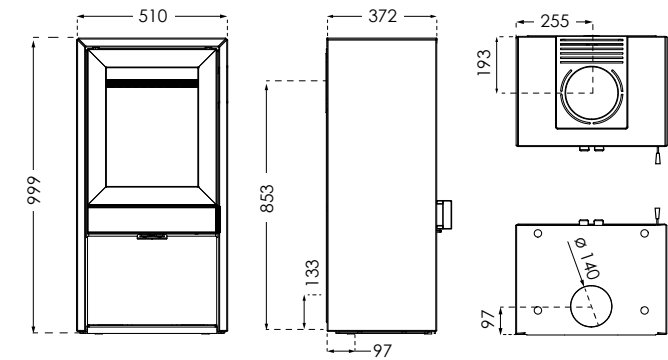
NB! All height dimensions are without adjusting feet. Measurements are in mm.

TT60 / TT60W



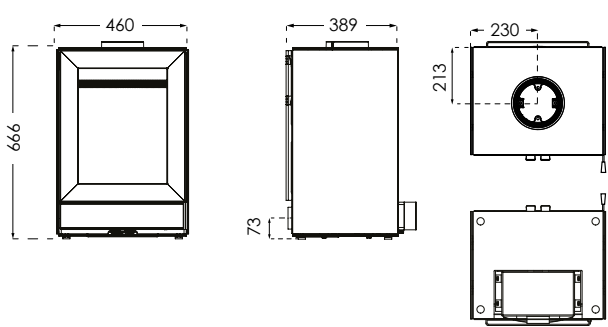
Weight in kg 143

TT60S



Weight in kg 178

TT60W



Weight in kg 116

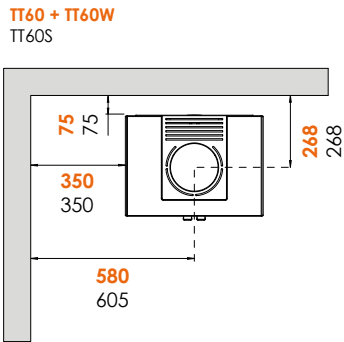
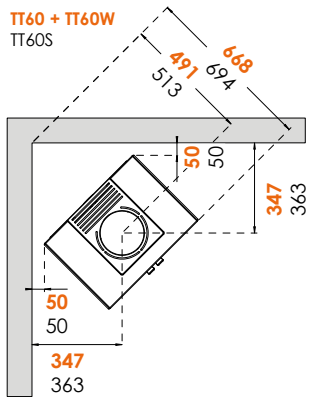
Non-insulated flue

TT60 · TT60S · TT60W

Nominal effect in kW	6
Operating range in kW	4 - 8
Efficiency rate %	83
Heats sqm	30 - 120

In order to avoid discolouration of painted and treated surfaces, TermaTech recommends the same distance from flammable materials as for non-flammable materials. This distance increases the convection itself around the stove and also eases cleaning.

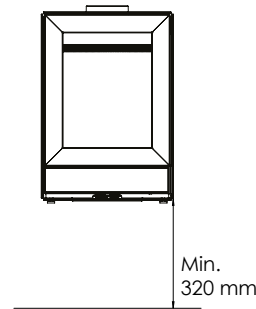
All distances relate solely to the distance of the stove from flammable materials. No account has been taken of national requirements for the use of stove flues or their distance from flammable materials.



Mounting

TT60W

TT60W is designed for mounting on a non-flammable wall. If the floor covering is flammable, the stove must be mounted at least 320 mm above the floor. Talk to your dealer and/or chimney sweep about the best fireproof mounting solution. The distances from flammable material are identical to those applying to the TT60, see previous page.



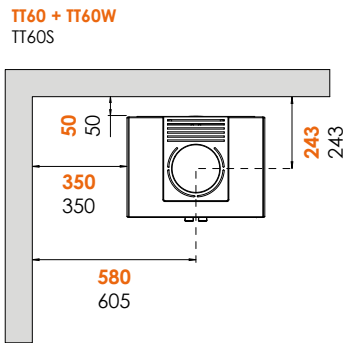
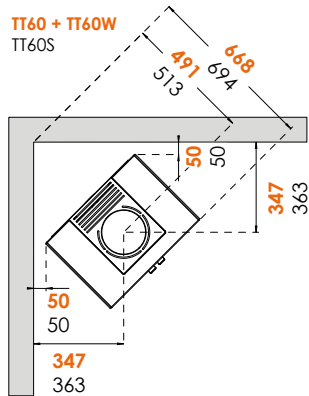
Half-insulated flue

TT60 · TT60S · TT60W

Nominal effect in kW	6
Operating range in kW	4 - 8
Efficiency rate %	83
Heats sqm	30 - 120

In order to avoid discolouration of painted and treated surfaces, TermaTech recommends the same distance from flammable materials as for non-flammable materials. This distance increases the convection itself around the stove and also eases cleaning.

All distances relate solely to the distance of the stove from flammable materials. No account has been taken of national requirements for the use of stove flues or their distance from flammable materials.





www.termatech.com

SPECFLUE

...designed to be better

Distributed in the UK by Specflue Ltd.
www.specflue.com